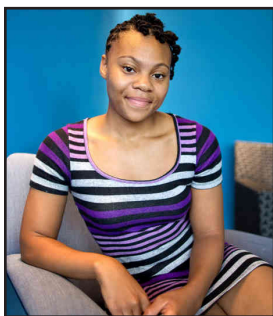


EVIDENCE-BASED PROGRAMS for CHILDREN, YOUTH & FAMILIES

2014 Fourth Annual DC Summit

KEYNOTE SPEAKER BIOSKETCHES



MELSON, RASHEMA

Rashema Melson is Anacostia High School's most recent valedictorian and, in the fall, will attend Georgetown University on a full scholarship. Melson's achievements are remarkable for any high school student, particularly when maintaining a 4.0 GPA and competing as a cross-country,

track and volleyball athlete — all while overcoming the challenges of residing in a D.C. homeless shelter with her mother and two brothers. Her positive attitude, determination and community support system have been instrumental in her reaching her goals up until this point. Undoubtedly, this strong foundation will prove useful as Melson continues her journey as a freshman at Georgetown with the ultimate goal of attending medical school to become a forensic pathologist.



SAMUELS, BRYAN

Bryan Samuels is the Executive Director of Chapin Hall, one of the nation's leading research and policy centers focused on improving the well-being of children and youth, families, and their communities. Before joining Chapin Hall, Samuels was appointed by President Barack

Obama as Commissioner of the Administration on Children, Youth, and Families (ACYF), making him the highest-ranking federal child welfare policymaker in the country from 2010-2013. As ACYF Commissioner, he emphasized the importance of child well-being and the use of data-driven approaches to improve the welfare of vulnerable children and youth. Samuels has over twenty years of experience in child welfare, including having served as the Chief of Staff of Chicago Public Schools under Arne Duncan and as Director of the Illinois Department of Children

and Family Services. He was also a lecturer at the University of Chicago's School of Social Service Administration from 1997 to 2003. He has a bachelor's degree in economics from the University of Notre Dame and a master's from the University of Chicago Harris School of Public Policy.



STROUL, BETH A.

Beth A. Stroul, M.Ed. is President and co-founder of Management & Training Innovations, Inc. and serves as a consultant in the area of mental health policy, specializing in children's mental health. Since entering the mental health policy field in 1979, she has completed numerous

research, evaluation, policy analysis, strategic planning, technical assistance, and training projects related to service systems for children and adolescents with emotional disorders and their families.

Ms. Stroul is known for co-authoring a widely-circulated monograph which presents a conceptual framework and philosophy for a system of care for children and adolescents with mental health disorders and their families, entitled, *A System of Care for Children and Adolescents with Severe Emotional Disturbances*. She has published extensively in the field of children's mental health, including many monographs and reports, as well as numerous contributions to professional journals and books.